



PSI, F.Y.I.

Engineering... Training... and YOU

Headlines:

- **FIKE Introduces new Impulse Valve**
- **Impulse Releasing Module (IRM)**
- **Reload Kits**
- **Cylinder Refilling**

FIKE IMPULSE VALVE CYLINDER ASSEMBLY

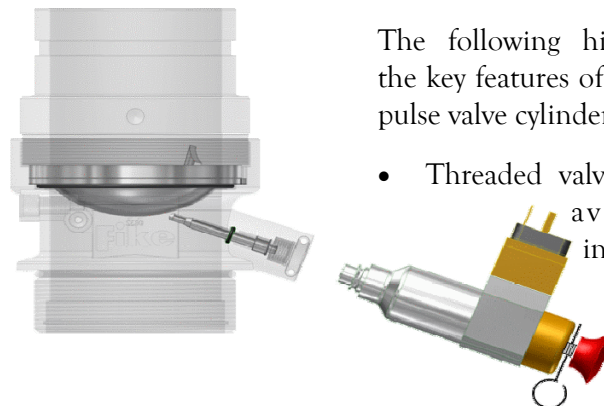
FIKE Introduces new Impulse Valve

As most of you are already aware, FIKE recently migrated away from the GCA actuated cylinders, replacing them with Impulse activated cylinders.

If you haven't begun to work with the Impulse cylinders yet, rest assured, you will be in the near future as the GCA activated cylinders are no longer available.

3" (replaces the welded valve on GCA and SAV operated cylinders)

- Same valve assembly for E-Caro or FM200 cylinders
- Reverse-acting rupture disc, opened upon impact caused from a strike pin activated manually or electricaly from the IVO (impulse valve operator)



The following highlights the key features of the Impulse valve cylinders:

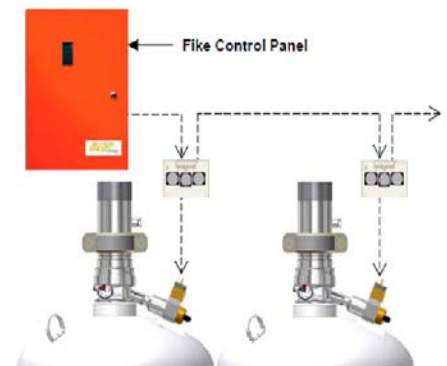
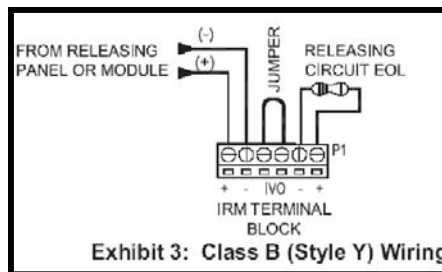
- Threaded valve body, available in 1" or

Impulse Releasing Module (IRM)

The Agent Releasing Module (ARM) previously used on the GCA cylinders has been replaced with the IRM, Impulse Releasing Module.

The IRM wiring and connection to the FIKE control panel is exactly the same as the ARM.

ARM's and IRM's can be placed on the same releasing circuit and maintain the same 6 releasing module maximum (combined).



Upcoming Events!

- **NONE SCHEDULED AT THIS TIME**

Information Attached:

- **FIKE: Impulse Technical Introduction**
- **FIKE: Impulse FAQ**

For More Information:

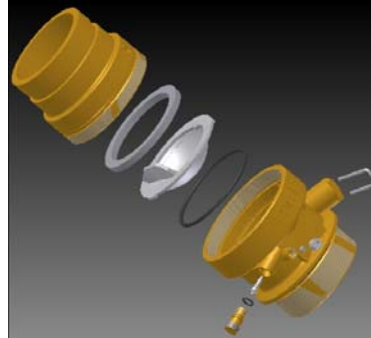
- **FIKE: Reconditioning Instructions**
- **FIKE: Impulse Releasing Module Product Manual**
- **FIKE: Liquid Level Indicator Instruction Manual**
- **FIKE: Agent Equipment, Design & Service Manual**
- **FIKE: Fire Suppression Recharge/ Fill Manual**



Reload Kits

The Impulse Valve Container Reload Kits include the following:

- Rupture Disc
- O-Ring
- Friction Ring
- Fill Valve Core



NO MORE GCA TO HANDLE AND REPLACE!

RELOAD KITS ARE NOT AGENT SPECIFIC.

- 1" Reload Kit
- 3" Reload Kit

Cylinder Refilling

As many of you know, the welded style cylinders previously offered had to be inverted when adding Nitrogen to allow for maximum agent saturation.

The threaded impulse valve cylinders currently being distributed, operate as follows:

- A fill valve goes directly into the siphon tube.

- Liquid agent is added first (utilizing the Core Removal Tool)
- Nitrogen is then added and forced down the siphon tube (utilizing the Core Depressor Tool).
- As nitrogen is forced out of the bottom of the siphon tube it bubbles up through the agent, saturating the

liquid agent with nitrogen in the process.

PROPER PROCEDURES MUST BE FOLLOWED TO ENSURE IVO RESET AND AVOID ACCIDENTAL DISCHARGE.

BAFFLE PLATE MUST BE REPLACED ON THE CYLINDER PRIOR TO REFILLING OR SHIPPING.

Protective Systems, Inc. places a high value on individual education. We are dedicated to providing ongoing training for our managers, designers, and technicians who are expected to maintain a minimum NICET II certification in fire alarm and/or fire special hazards.

As codes, applications and enforcements are continually changing, Protective Systems, Inc. feels it is important to highlight specific topics to provide clarification and encourage discussion.

Please forward all correspondence to kim.nielsen@callpsi.com

PSI, F.Y.I.

Editor, Kim Nielsen

Orlando

220 Springview Commerce Dr. #170
DeBary, FL 32713
Phone: 386-944-5820
Fax: 386-668-0877
Email: kim.nielsen@callpsi.com

S. Florida

1719 NW 79th Ave.
Doral, FL 33126

Tampa

5404 56th Commerce Park Blvd.
Tampa FL 33619